

Customer :

customer

Customer part :

customer part

Comment :

Comment

S1=2.99

S2=3.68

Tmax=459

Tp S2=498.0

PI=0.45

HI=78

Sample =1721.30

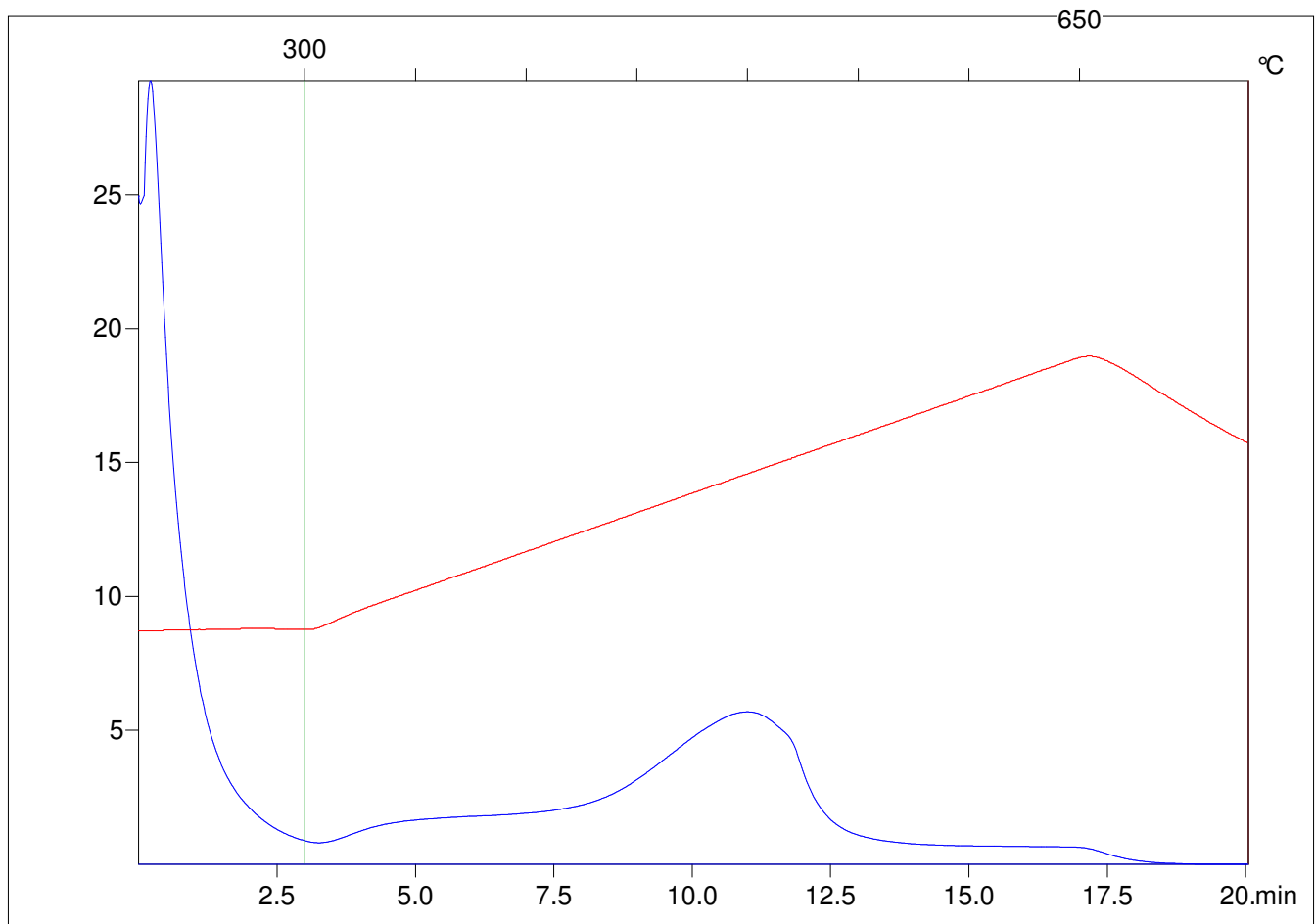
Method =Bulk Rock

Cycle=Basic

KFID(10*9)=1444

Qty =70.8

TOC=4.7



C:\VINC\PK2_1792\PK030.R00 : FID pyrolysis graphic

State

Pyro Status

Oxi Status